



# DISPOSABLE BIOPSY FORCEPS

## NO COMPROMISES: QUALITY MEETS COMFORT

The wide choice of disposable biopsy forceps ensures that you are perfectly equipped for every application. MICRO-TECH offers forceps with diameters of 1.8 mm, 2.3 mm and 3.0 mm in addition to lengths of 120, 180, 230 and 260 cm. Whether they come with or without a spike, coated or uncoated, with standard or toothed

spoons – all models are characterized by their high reliability. The excellent cutting edge of our biopsy forceps allows you to take diagnostically conclusive tissue samples in a safe and easy manner. In addition to the comfort-forceps with soft grip, our range also includes the more cost-efficient eco-forceps (TRUBITE).

### SPECIFIC CHARACTERISTICS

- Reliability
- Very comfortable to use
- Diagnostically conclusive biopsies
- Wide product variety
- High quality riveted scissors joints
- Working channel-friendly design



Toothed spoon



Scissors joint

## SUCCESSFUL IN PRACTICAL USE

The biopsy forceps perform in practice thanks to their ease of insertion and excellent mobility. The area to be examined can therefore be reached easily and rapidly. During tissue sampling, the forceps are outstanding for their accurate control and precise cut.

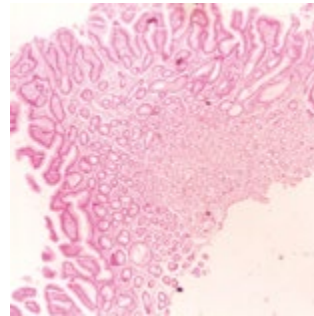
Due to their particularly sharp cutting edge, the forceps allow precise removal of biopsates. The amount of effort in this case is minimal. The biopsates acquired biopsy samples are large and therefore provide sufficient tissue for diagnostically conclusive findings.



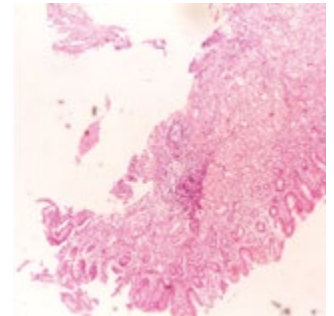
Biopsy removal



After biopsy removal



Biopsate removed with a toothed cutting edge



Biopsate removed with a smooth cutting edge



## GRIP IN A COMFORT- OR ECO-VERSION

With the grip of the forceps, the jaw section is perfectly under control. It offers you precise guidance even with sharply angled endoscopes. The soft, anti-slip rubber coating handle makes work safe and pleasant. Two different handles are available:

The comfort-version with the soft antiskid rubber makes handling safe and convenient to the eco-version with the plastic handle.

## JAW SECTIONS FOR EVERY INTERVENTION

Whether for biopsies or for removal of small polyps – the disposable biopsy forceps are perfectly equipped for any task with different jaw sections: with a smooth or a toothed cutting edge and with or without a spike. The jaw section can be precisely controlled and opened at a wide angle.





### HIGH QUALITY COATING

A choice of an uncoated and coated metal coil is available. Additional markings are provided on the coating to facilitate orientation during use.

### RAPID IDENTIFICATION

The forceps components have different colour codes for quick identification and choice of application field.

Handle:

- white – toothed cutting edge
- grey – smooth cutting edge

Jaw section protective cap:

- red – with spike
- yellow – without spike

Coating:

- grey – bronchial forceps  
Ø 1.8 mm, 120 cm long
- yellow – paediatric forceps  
Ø 1.8 mm, 180 cm long
- orange – gastric forceps  
Ø 2.3 mm, 180 cm long
- blue – colon forceps  
Ø 2.3 mm, 230 cm long
- orange or blue – macro forceps  
Ø 3.0 mm, 180 und 230 cm long

## SPECIFICATIONS

| REF                  | Ø mm | Length mm | Spike | Covering | Jaw      |
|----------------------|------|-----------|-------|----------|----------|
| <b>MACRO FORCEPS</b> |      |           |       |          |          |
| NBF01-01030180       | 3.0  | 1800      | No    | Without  | Standard |
| NBF01-01030230       | 3.0  | 2300      | No    | Without  | Standard |
| NBF01-01130180       | 3.0  | 1800      | Yes   | Without  | Standard |
| NBF01-01130230       | 3.0  | 2300      | Yes   | Without  | Standard |
| NBF03-01030180       | 3.0  | 1800      | No    | Orange   | Standard |
| NBF03-01030230       | 3.0  | 2300      | No    | Blue     | Standard |
| NBF03-01130180       | 3.0  | 1800      | Yes   | Orange   | Standard |
| NBF03-01130230       | 3.0  | 2300      | Yes   | Blue     | Standard |
| <b>TRUBITE</b>       |      |           |       |          |          |
| EBF51-11023180       | 2.3  | 1800      | No    | Without  | Standard |
| EBF51-11023230       | 2.3  | 2300      | No    | Without  | Standard |
| EBF51-11123180       | 2.3  | 1800      | Yes   | Without  | Standard |
| EBF51-11123230       | 2.3  | 2300      | Yes   | Without  | Standard |
| EBF53-11023180       | 2.3  | 1800      | No    | Orange   | Standard |
| EBF53-11023230       | 2.3  | 2300      | No    | Blue     | Standard |
| EBF53-11123180       | 2.3  | 1800      | Yes   | Orange   | Standard |
| EBF53-11123230       | 2.3  | 2300      | Yes   | Blue     | Standard |

Packaging unit: 10 pieces

Also available as hot-biopsy-forceps